

# GEARBOX 3 INSTALLATION GUIDE

---

Welcome to the GearBox installation assistance document. This installation process will install the GearBox software, and optionally, device drivers for Line 6 hardware and the Line 6 Monkey utility. This document is designed to act as a guide to help you through the installation process.

## Preparing to Install

### Quit other applications

It is strongly recommended that you exit all other programs before running the GearBox installation program.

### Restart Before Re-Installing

If you need to re-install GearBox, you should restart your machine just before you run the GearBox installer program to re-install. This insures that your computer has not retained a running version of the Line 6 driver in memory, which can cause conflicts when re-installing.

### Don't Connect Your Hardware yet!

Before installing the GearBox software, make sure that your Line 6 hardware IS NOT connected. You will be prompted to connect the supplied USB cable to your new hardware during the installation process. Leaving it unconnected until prompted allows the Line 6 drivers to be successfully installed.

### GuitarPort 2.5 Users

You do NOT have to uninstall GuitarPort 2.5 before installing GearBox.

### Insert the GearBox CD

If you're installing from CD, insert the GearBox CD in your CD-ROM drive. The GearBox Installer will usually start automatically. If it doesn't, then browse the CD and double click on the Setup.exe program to get you going.

### Downloadable Installer

The latest GearBox Installer is also available for download. Run Line 6 Monkey to check for the latest version, and connect to the download.

Ready to get started? Mac users click [here](#), Windows users click [here](#).

# INSTALLATION GUIDE – MAC OS X

---

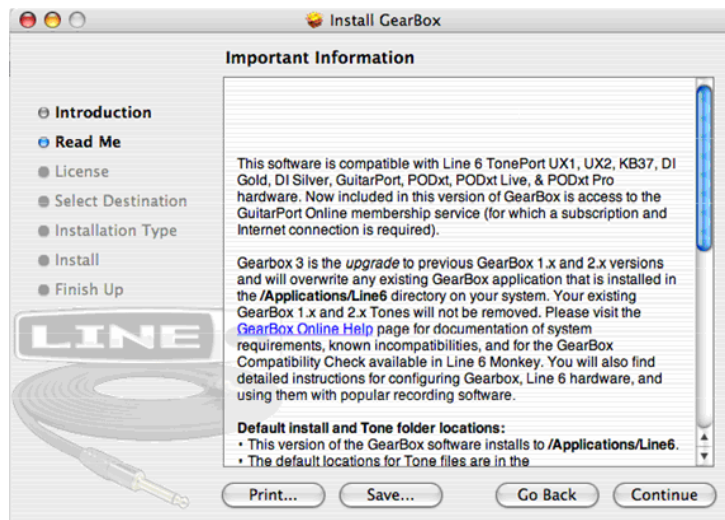
## Welcome

When the installer starts, you will see a **Welcome** dialog similar to the following:



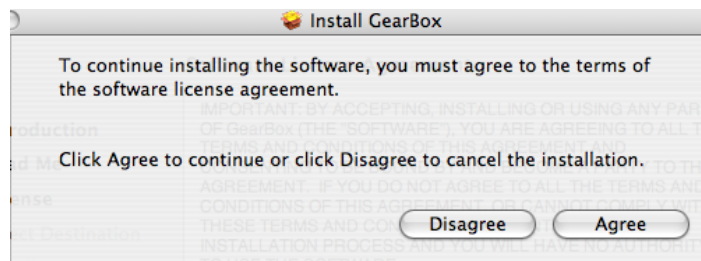
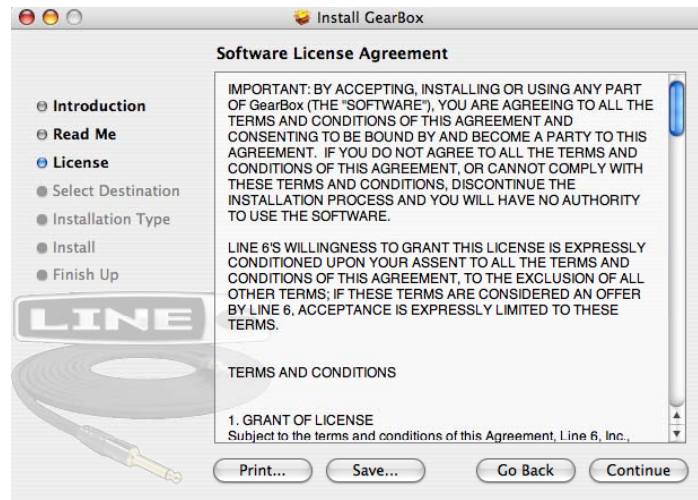
Notice that the installer prompts you to plug in your hardware into the USB port. Click **Continue** when done.

A dialog with **Important Information** is presented. Read it carefully, and click **Continue** when ready to proceed.



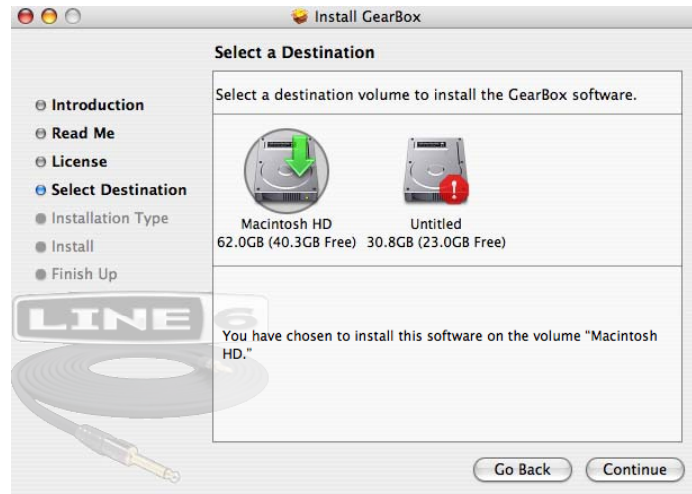
## License Agreement

The installer presents you with a **License Agreement** that you will need to agree to in order to install and use GearBox. After carefully reading the license, select **Continue**, then **Agree** if you consent to the terms of this license, and the Installer will allow you to proceed. If you do not agree with the license, you cannot install GearBox.



## Select Destination

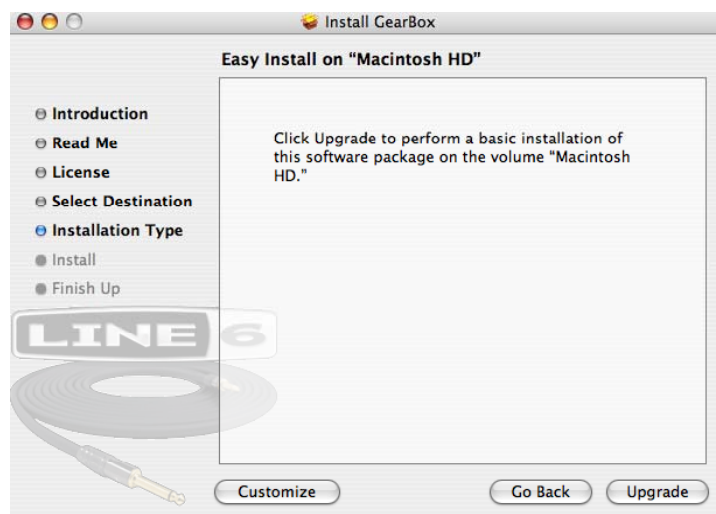
Your computer will ask you to pick a destination volume where it will install GearBox, as shown below



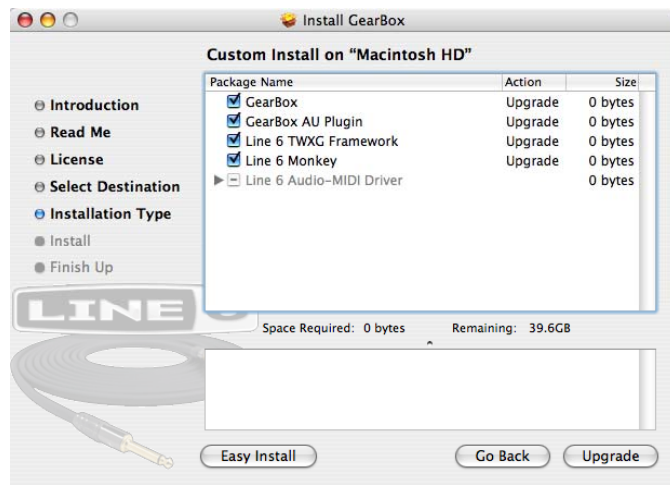
Click **Continue** when ready to proceed.

## Easy Install vs. Custom Install

For most users, Easy Install is the way to go. The installer will install GearBox, all necessary Line 6 drivers, and Line 6 Monkey, which performs important compatibility checks and will provide you with a headache-free path to future upgrades and optional add-on features.



For you advanced users and other smart-alecky types, clicking **Customize** will allow you to pick exactly what you want installed on your computer.

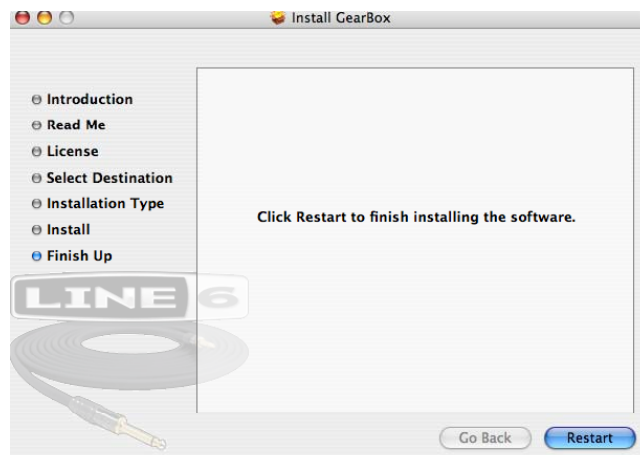


## Install

When you're ready to proceed, click **Upgrade**. You may be prompted to enter your password, as shown here



And...tada! You're done. After the installer performs its magic, you'll be prompted to **restart your computer** for the changes to take effect.



# INSTALLATION GUIDE – WINDOWS

---

## Welcome

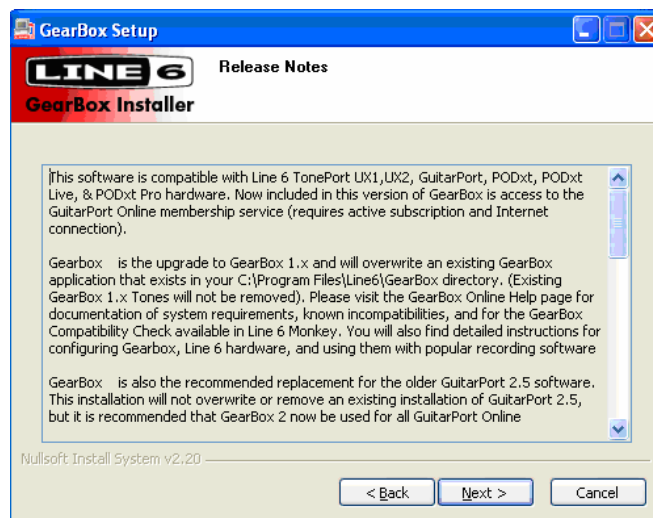
When the installer starts, you will see a **Welcome** dialog similar to the following:



Click **Next** to continue.

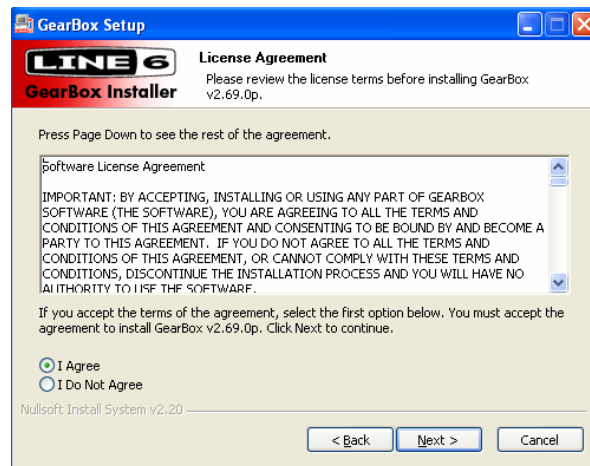
## Release Notes

A dialog with detailed **Release Notes** is presented. Read it carefully and click **Next** when ready to proceed.



## License Agreement

The installer presents you with a **License Agreement** that you will need to agree to in order to install and use GearBox. After carefully reading the license, select the **I Agree** option if you consent to the terms of this license, and the Installer will allow you to proceed. If you do not agree with the license, you cannot install GearBox.



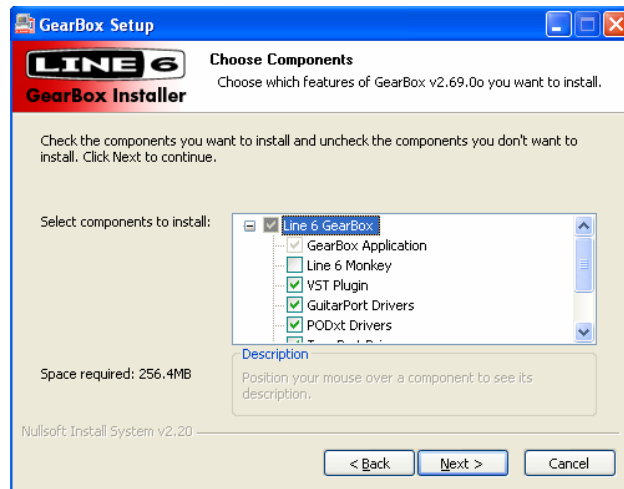
## Disconnect your Device

Just in case you weren't paying attention at the top of this tutorial, the Installer reminds you one more time that your hardware isn't to be connected at this time. Don't make us have to tell you again...



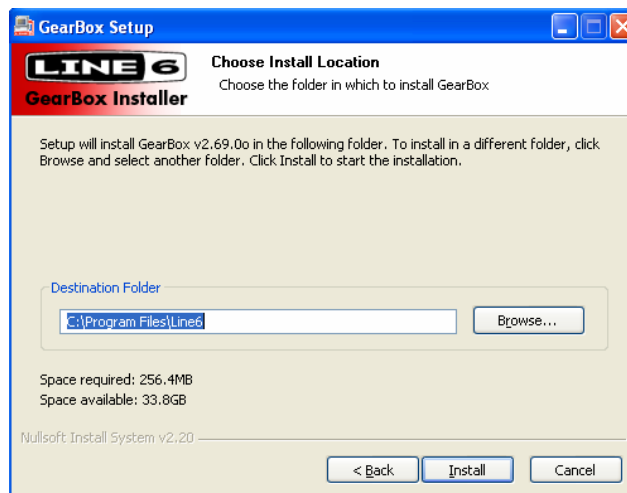
## Choose Components to Install

You must install both the **GearBox Application** and the **TonePort Drivers** for both the software and hardware to function correctly. **Line 6 Monkey**, which provides important compatibility checks as well as easy updating features, will be selected for you automatically. If Monkey does not need updating, its checkbox will automatically be unchecked. For details of each component, click on it and then read the notes in the **Description** area.



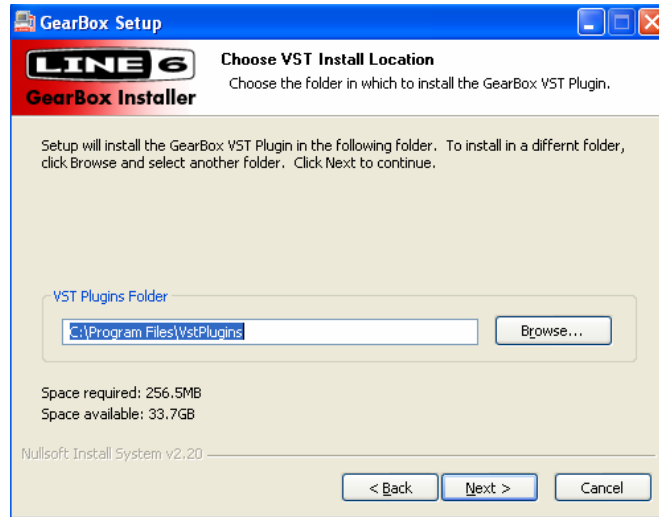
## Choose Install Location

If you'd like to install in the standard default location, just click the **Install** button. If you'd like to choose another location, click **Browse**:

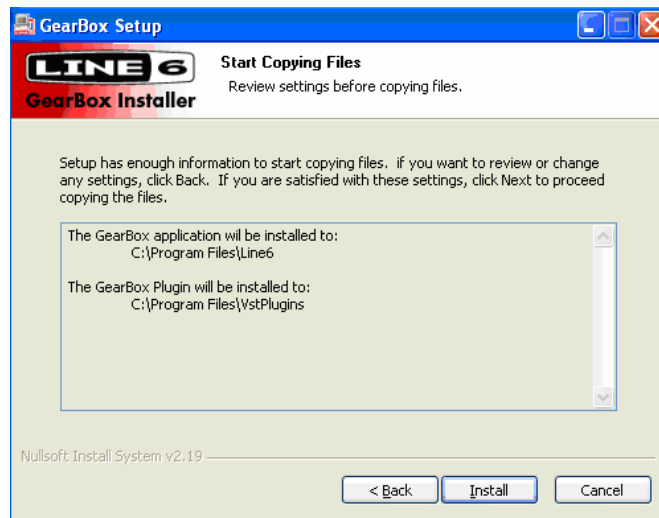




The installer will also ask you where you would like the GearBox Plug-in installed. Choose the default location shown, or browse for a different one...

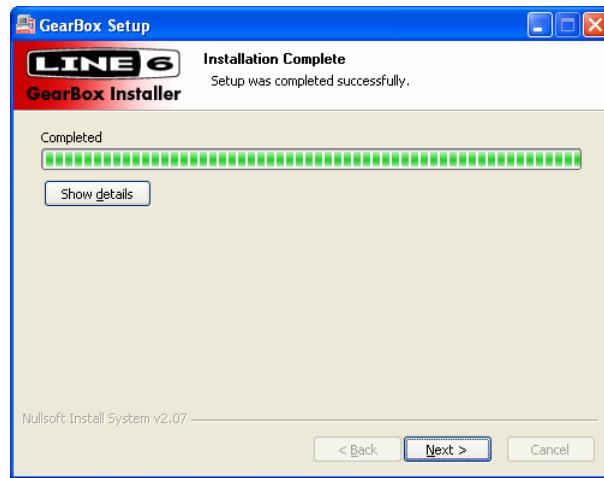


Just to make sure you are happy with where you want the GearBox Application and Plug-In installed, **you will be asked one more time to confirm** their locations before the Installer goes to work. Isn't that thoughtful?



## Allow Installation to Complete

Allow the GearBox installation process to run – it will inform you once the Setup is completed successfully. Click **Next** to continue.



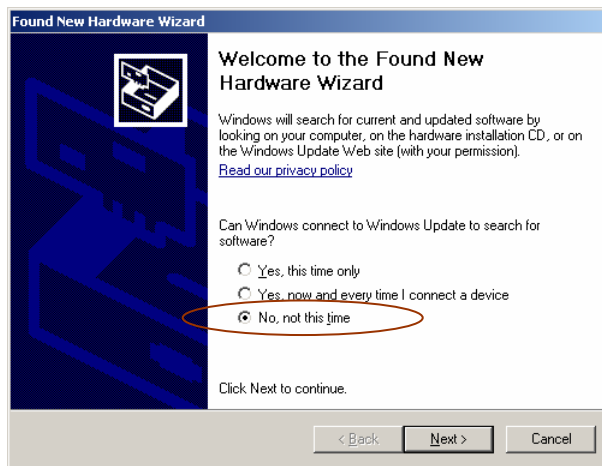
## Connect your Device

You will next be prompted to connect the USB cable from your Line 6 device to your computer. Plug the USB cable in and wait for the Windows hardware installation process to start automatically – you do not need to click **Next** in this dialog yet.

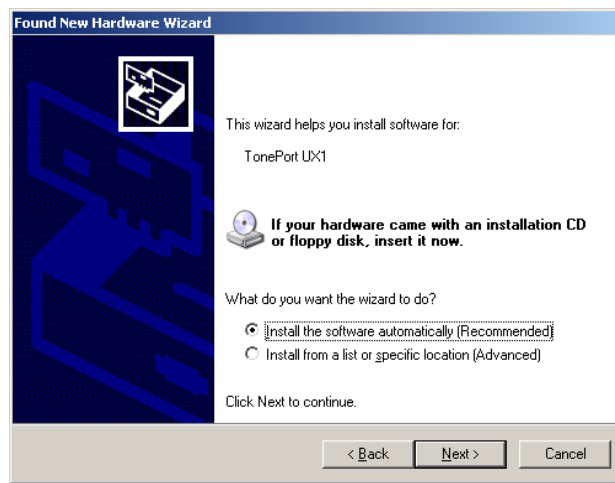


## Windows New Hardware Wizard

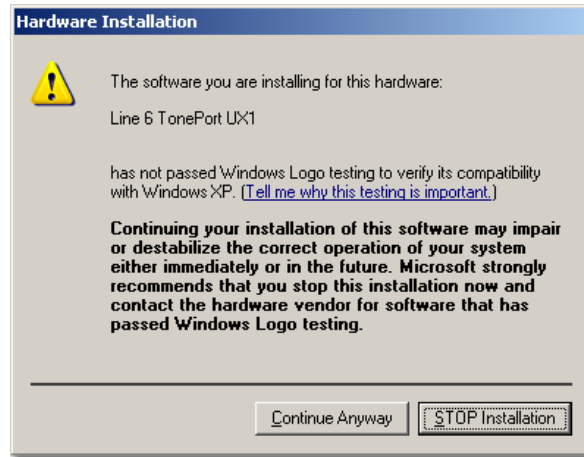
As soon as you have connected your hardware to the computer, Windows automatically detects a new USB device and launches the **Found New Hardware Wizard** dialog. Since there is no need to connect to Windows Update for this process, choose the **No, not this time** option and click the **Next** button to install the appropriate drivers.



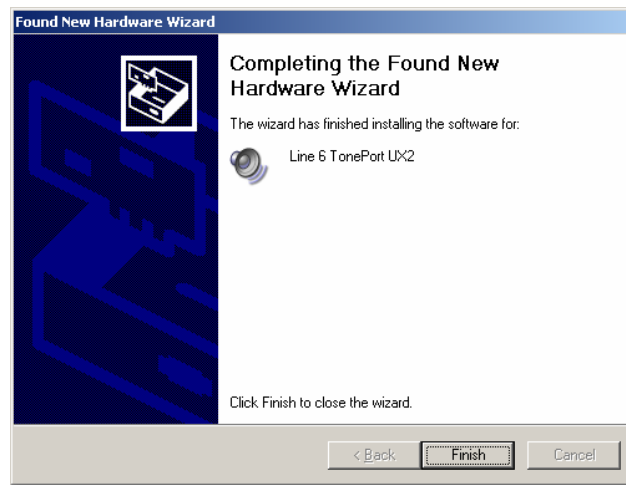
The next screen should already be set to **Install the software automatically** - just click the **Next** button to continue.



When presented with the next Alert dialog, simply click the **Continue Anyway** button to ignore this message and continue the installation



Allow the driver installation process to complete. You will be prompted once the Hardware Wizard is done – click the **Finish** button

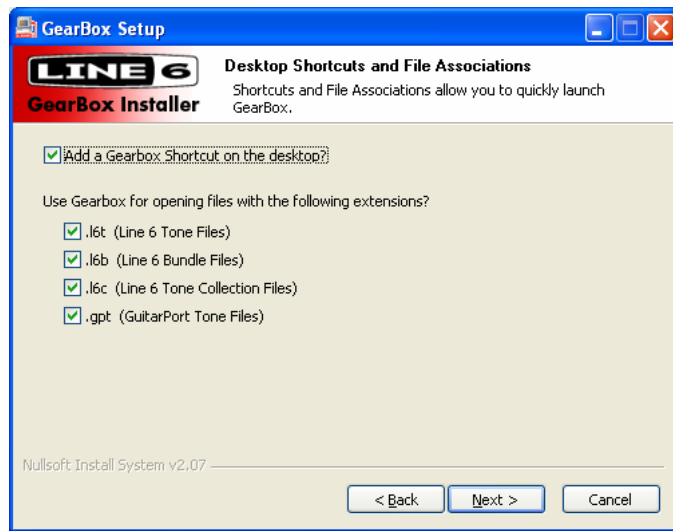


You will now be back at the **Plug in Your Device** screen – click **Next** to proceed.



## Desktop Shortcut and File Associations

Next you are prompted if you would like a Shortcut icon for the GearBox software added to your Windows desktop. You can also check all the file types that you would like to be “associated” with the GearBox software (meaning, if you double click one of these types of files within Windows, it knows to launch the GearBox software automatically, which is a nice convenience). Choose your options and then click **Next**.



## Done!

You are now complete with the installation for all the components you selected. Click the **Finish** button, and then launch the GearBox software to start using your Line 6 hardware.

